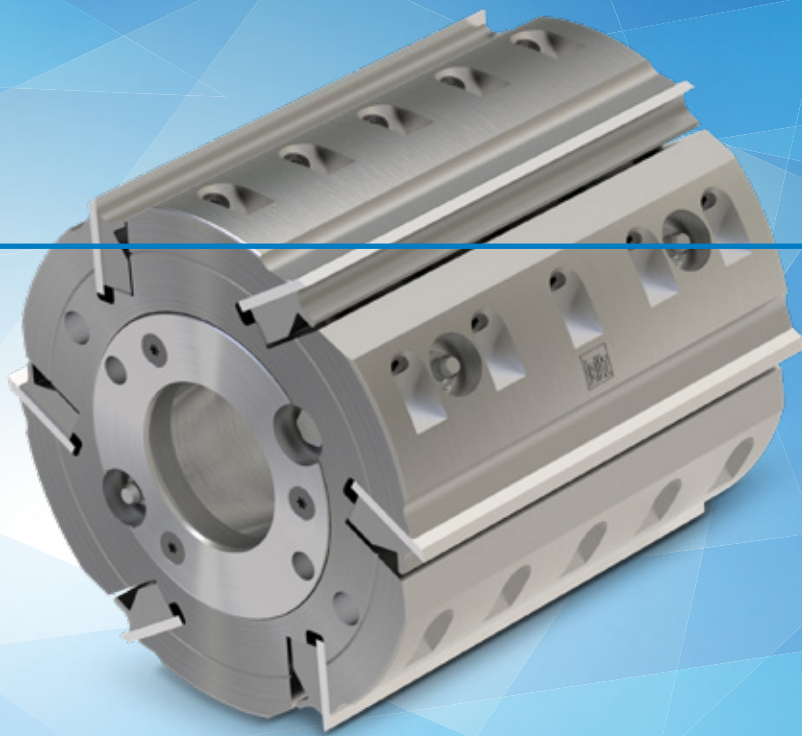


# Hydro planerhead

The conventional head in a new design



**When planing, many factors can influence and also impair the performance of the tool and thus also the surface quality. When the tool needs to be changed incurs downtime and therefore reduces production efficiency.**

Hydro planing cutterheads from Leitz are extremely durable compared to conventional tools. The Leitz knives supplied are of such a quality, they need be changed less frequently while maintaining a consistently high machining quality.

## YOUR BENEFITS

- Long-lasting tool body
- Long tool life
- Easy handling

## AT A GLANCE

- Radial and axial access to the grease nipple
- For standard 3 mm knives with a height of 30 mm and 35 mm (from Ø 203 mm)
- Suitable for conventional planing machines with precision spindle
- For soft and hard wood
- Standard: available from stock, special production: available at short notice
- Cutting material HS, MC and HW



Up to 6-fold

- HIGHER TOOL LIFE THAN UNCOATED HS-PLANING KNIVES

Up to -80 %

- LOWER REGRINDING COSTS COMPARED TO HS-PLANING KNIVES

Up to -80 %

- REDUCED MACHINE DOWNTIME

## Your benefits due to ...



### QUALITY

#### Robust construction for best planing results

- No jamming of the tool body on the machine spindle due to a special surface treatment on the sleeve
- Optimum machining results due to excellent tool concentricity



### SUSTAINABILITY

#### Long-lasting and environmentally friendly

- Up to 6 times longer tool life than HS-planing knives due to using Marathon-coated knives
- Extremely durable tool body due to a special surface treatment



### EFFICIENCY

#### Easy handling

- User-friendly handling / maintenance through radial and axial access to grease nipples

The conventional planerhead newly created.



[www.leitz.org](http://www.leitz.org)

